



St Saviour's Weekly Update

Friday 18th October 2024

Dear St Saviour's Families,

Thank you to everyone who came in to meet with the teachers over the last couple of weeks. If you were unable to make the appointment, please do get in touch with your child's class teacher. Meetings for Nursery parents are next week.

Harvest



As I mentioned last week, our Harvest appeal this year will be in aid of The Passage. We will be collecting money for them, trying to fill the 'donation station' throughout next week. Children can bring in money to contribute from Monday - I am going to show them where to put their donations in Monday's assembly.

We will be having a thanksgiving service at St Saviour's Church for Reception to Year 6 on Thursday 24th October at 2:30pm, where some of the children will be sharing readings and prayers. It would be great to see you there!

Buster

Alexandre is taking Buster home this week. He consistently tries his best in all subjects. He works hard to not only improve his own learning, but also helps his table group too. He is never involved in arguments at playtime and is a fantastic role model for other children in the school. He shows humility when he has done the right thing and endurance when he finds his work challenging. Alexandre, you are brilliant!

Dates for this term

Dates are also on the school website.

21 and 22.10.24 Diwali dance workshops

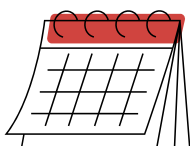
24.10.24 2:30pm Harvest Service at Church - all welcome!

25.10.24 Last day of term - normal finish time

Dates for next term

W/b 4.11.24 Book Fair in school

W/b 11.11.24 Antibullying Week



Stars of the Week

Reception - Ella; **Year 1** - Ruby; **Year 2** - Luna;
Year 3 - Annabel; **Year 4** - Reggie-Rae; **Year 5** - Aimar;
Year 6 - Emma C

Well done on a fantastic week!

Attendance

The national target for attendance is **96%**. Our overall school attendance for this week was **95.5%**.

Year 1 and Year 2 drew for the Attendance Cup this week with 98.3% - that doesn't happen very often!
Reception 94%; Year 3 96%; Year 4 95%; Year 5 95%;
Year 6 92%

Please call in to the Office on each day that your child is sick.

Children need to be in school by 8:55a.m. If they arrive after this time, you will need to sign them in and they will be marked as late.

Teacher Angel

Mr Goulding is the Teacher Angel this week. He is good at sport and he helps the children improve in PE, especially basketball. He is kind, friendly and polite, and makes lessons fun. He makes the children laugh a lot! He is really helpful and the children really enjoy the sport competitions that he organises (like the cross country race in Regent's Park). Thank you for everything you do!

School Lunch Tasting Session

I have arranged a 'tasting afternoon' with our school meals provider, Stir. Parents will be able to come in and try samples of some of the food, as well as talking to representatives from Stir about food allergies or any other questions you have about the menu. This will be on Thursday 28th November at 3pm.

This has been a very long half term (next week is week 8!), so have a restful weekend!

Miss Granite



What Three Questions?

Nursery

What happens to the trees in Autumn?

Can you tell someone at home how you are feeling?

What can you do if you are feeling upset or angry?

Reception

Literacy: Can you think of items that begin with the 's' phoneme to go in Sam's Sack?

Maths: What numbers go together to make 4? "4 is made of __ and __."

PSED: What are the four colours in the four Zones of Regulation and what do they mean?

Year 1

English: What is the difference between fiction and non-fiction?

Geography: How can weather affect certain jobs?

Maths: Can you read and write the numbers to 10?

Year 2

Art: what is a self portrait?

RE: what is celebrated at Hanukkah?

English: what is a verb? What do all sentences need?

Year 3

Science: If we are testing how permeable a rock is, what can we expect to see in our results?

Computing: How would you explain the difference between WiFi and Internet?

English: Can you explain the meaning and give an example of a conjunction, an adverbial and present perfect tense?

Year 4

Science: Can you name 2 flowering and 2 non-flowering pond plants?

English: What are the features of a script?

Computing: Why can't we believe everything we read on the internet?

Year 5

Geography: What is the landscape of Greece like?

Maths: If you want to buy something for £75.80 and you only have £27.45 how much more money do you need?

English: Which features are used for writing a newspaper article?

Year 6

R.E: What does it mean to be part of the Sangha as a Buddhist?

Math: What are different the strategies for subtracting?

P.S.H.E: How can we overcome peer pressure?