



St Saviour's Weekly Update

Friday 20th September 2024

Dear St Saviour's Families,

We had our first Mass with Fr Chris yesterday - the children were very excited to meet him!

Our assembly theme this term is 'Hope' and we are learning about Moses' life in Exodus. We've been looking at the plagues this week and how they encourage us to persevere.

Our Musician of the Month is Kate Bush and I have sent home the Information Sheet for you to enjoy.

Macmillan Coffee Morning

I would like to invite you to a Macmillan Coffee morning on Friday 27th September, in the school hall from 8:30am to 10:00am.

My son, Mark, who worked here as a TA in Years 3 and 4, was diagnosed with cancer in July. The Macmillan community have been incredibly supportive of the whole family and I wanted to help with some fundraising.

I would love to see as many of you as possible, and share a cup of something together. If you could contribute some cakes or biscuits, that would be amazing!

Mrs Pearman

Dates for this term

Dates are also on the school website.

27.9.24 PTA Quiz night - get your tickets on Arbor! See email for instructions on how to purchase

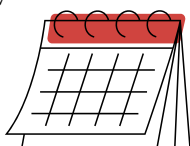
27.9.24 National Teaching Assistant Day

27.9.24 Macmillan Coffee morning

9.10.24 Individual photos

W/b 14.10.24 Parent teacher meetings

25.10.24 Last day of term - normal finish time



Stars of the Week

Reception - Esmail; Year 1 - Elsa; Year 2 - Rebecca; Year 3 - Elijah; Year 4 - Bianca; Year 5 - Gamaliel; Year 6 - Luxi

Well done for a fantastic week!

Attendance

The national target for attendance is 96%. Our overall school attendance for this week was 95.5%.

Reception won the Attendance Cup this week with 98% - what a great start!

Year 1 96%; Year 2 96%; Year 3 95%; Year 4 97%; Year 5 93%; Year 6 91%

Please call in to the Office on each day that your child is sick.

Children need to be in school by 8:55a.m. If they arrive after this time, you will need to sign them in and they will be marked as late.

Teacher Angel

Miss Fleck was given Teacher Angel this week. She is really nice, kind and caring. She helps the children with their work when they are stuck and they like her because she listens to them and is really fair. We are so happy to have her at St Saviour's!

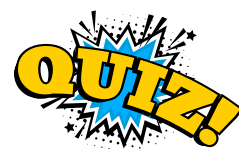
Asda

If you shop at Asda and use Asda Rewards, please consider supporting St Saviour's as part of their 'Cashpot for Schools' scheme!

Don't forget to buy your tickets for the Quiz Night next week - it's going to be a fun evening! The staff have been revising furiously...

Have a great weekend,

Miss Granite





What Three Questions?

Nursery

Miss Weekes acted out a fairy tale at carpet time. Can you remember which one it was?

What was your favourite messy play activity? Shaving foam with animals, rice, cornflower and water?

We have been reading about feelings. What can we do when we feel sad?

Reception

Literacy: what country does our new text 'Bringing the Rain to Kapiti Plain' come from?

Phonics: can you practice writing the letter m and d using the pattenr?

Maths: can you take out a group of 1, 2 or 3 objects from a larger group?

Year 1

English: What is a noun phrase?

Maths: Can you write your number bonds to 6?

RE: How do people care for / damage the world God has given us?

Year 2

Maths: what are number bonds to 10 and what pattern is there for number bonds?

Science: why does the material a contractor uses matter for a structure?

RE: what is Rosh Hashanah and why is it important to Jewish people?

Year 3

RE: who was Siddhartha?

English: what is a noun, a verb, an adjective and an adverb?

Maths: What do the hands and numbers mean on an analogue clock face?

Year 4

Geography: What are the different stages of a river?

R.E: Can you explain why the 'Aum' symbol is important to Hindus?

Computing: What are networked devices and how do they connect?

Year 5

English: what are the main features of a biography?

R.E: What is a Naam Karan ceremony and what happens during the ceremony?

Maths: what is the best method to work out $3423 + 7365$ mentally and why?

Year 6

Science: How do animals adapt to their environment?

R.E: What is the noble eight-fold path, and how might this help a Buddhist in their everyday life?

P.S.H.E: How do we keep sun safe?